

Name: \_\_\_\_\_

# What are the parts of a plant?



**Word Box**  
Roots  
Stem  
Leaf  
Flower

Color the plant. Then label the parts of the plant using the words in the word box. On the lines below, describe one part of the plant and tell why you think it is important.

---

---

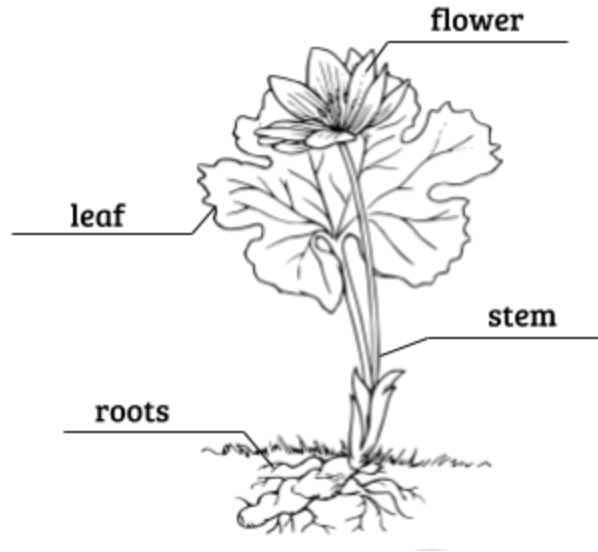
---

---

---

---

# What are the parts of a plant?



Students color the plant and label its parts using the words provided in the word box. With students, review each part and its functions. After students have discussed the jobs of each part of the plant, have them choose one part (roots, stem, leaves, or flowers) to write about. Students should describe why that plant part is important to the plant. Could it survive and grow without that part? Could it reproduce (make new plants)?

**Roots** anchor the plant in the soil so it can grow upwards without falling over. Roots also absorb water and minerals from the soil. They are covered in tiny hairs that help absorb the water and minerals. Some roots store food for the plant to use later.

The **stem** supports the plant and allows it to grow upward. The stem moves water and nutrients from the roots up to the rest of the plant. It also moves sugars from the leaves where they are made to the other parts of the plant.

**Leaves** capture sunlight and carbon dioxide from the air. They use the energy from sunlight to combine carbon dioxide with water (absorbed by the roots) to make sugars. These sugars are the plant's food, and it needs them in order to grow.

**Flowers** are the part of the plant that allows it to reproduce. When the flower is pollinated, it can develop into a fruit that contains seeds. Because pollination is so important for flowering plants, an important job of many flowers is to attract pollinators (e.g., bees, butterflies, hummingbirds). That's why many flowers are brightly colored or have a sweet smell.