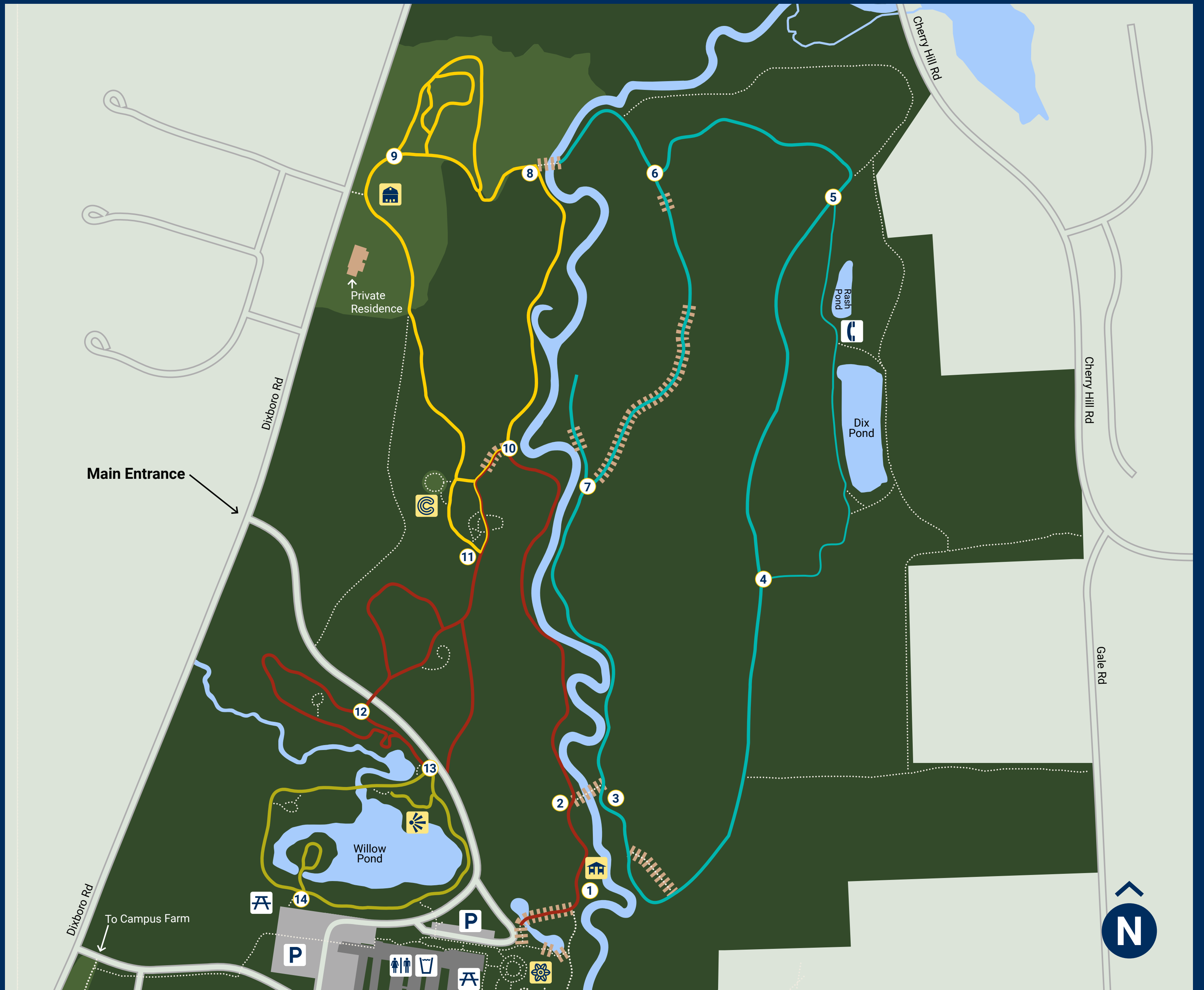
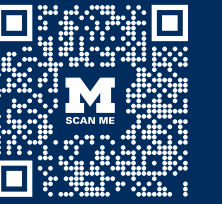


Matthaei Botanical Gardens

Scan the QR code to access a digital map:






Trails:

- Sue Reichert Discovery .5 mi
- Sam Graham Trees 1.1 mi
- Prairie .9 mi
- Dix Pond/Fleming Creek 1.7mi
- Secondary trail or service road
- Boardwalk or bridge

Legend:

-  Drinking Fountain
-  Blue Light Emergency Phone
-  Picnic Area
-  Parking
-  Restrooms

Points of Interest:

-  Labyrinth
-  Display Gardens
-  Gazebo
-  Lookout Point
-  Matteson Barns